

## HEBEFIX PRO



DE **Original-  
Betriebsanleitung**

EN Instruction Manual  
FR Instructions de service  
NL Gebruikshandleiding  
IT Istruzioni per l'uso  
PL Instrukcja eksploatacji

## GENERAL

You have purchased a product from JUNG PUMPEN, and therefore invested in quality and performance. To ensure that this product can deliver its high performance and operate to your complete satisfaction, please carry out the installation work in accordance with the instructions.

It is important that, before starting any work, each person has read and understood this instruction manual. The instructions must be kept available at all times at the site of the product. The manufacturer accepts no liability for any damage resulting from the failure to observe this.

## Intended use

The Hebefix PRO lifting station is intended to be used exclusively in stationary systems for lifting faeces-free wastewater, aggressive wastewater, and aqueous solutions with a salt content of up to 15 %. The lifting station is suitable for pumping domestic wastewater from domestic washing machines, dishwashers, washbasin, showers and bathtubs. A maximum of three drainage sources may be connected to the station and these must all be installed in the same room. The numerous connection options allow the direct connection of a water softening plant or gas condensing boiler in order to dispose of the aggressive wastewater produced in such systems.

Use for any other purpose or installation in non-approved areas is deemed to be improper use. Any liability claims or warranty claims against the manufacturer are thereby excluded.

The specifications in the technical data must be observed.



### Note!











The Hebefix PRO must **never** be used to dispose of wastewater from toilets or urinals.

## Supply package

Component	Quantity	Article no.	Component	Quantity	Article no.
Hebefix PRO	1	JP50050	Collars	2	
Swing-type check valve 1¼ "	1		Plug-in seal	3	
Hose elbow	1		Wall plug	2	
Nipple	2		Hook bolt	2	
Hose clips	6		Sealing plug	1	
Cover bolts	4		Activated carbon filter	1	

## SAFETY

The safety instructions in this instruction manual are marked with symbols and must be strictly followed! Failure to follow these instructions can be dangerous!

	Disconnect the power supply to the device and safeguard against reconnection		Unplug from the mains power socket
	Warning: Dangerous electrical voltage		General warning sign
	Warning: Potentially explosive atmosphere		Warning: Hot surface
	Warning: Damage and malfunctions		Warning of automatic start-up
	Warning: Frost hazard		Note

## Qualification of staff

This appliance can be used by children aged 8 years or over and by persons with limited physical, sensory or intellectual capabilities, or with limited experience and knowledge, provided that they are supervised or have been instructed in the safe use of the appliance and are aware of the dangers involved. Children must **NOT** be allowed to play with the appliance. Cleaning and user maintenance must **NOT** be carried out by children unless they are supervised.

If this appliance is fitted with a mains power cable that does not have a plug or other device to switch off the mains power, then the customer must install a mains disconnection device in the permanent electrical installation in accordance with the installation regulations. This disconnection device must completely disconnect the appliance from the power supply. It could take the form of a mains switch of over-voltage category III. For safety reasons, if the mains power cable of this appliance is damaged, it must be replaced by the manufacturer or his customer service department, or by a similarly qualified person.

Task	Personnel	Skills
Installation	Operating company	
Operation / visual inspection	Operating company / machine operator	Instruction by specialist company
Maintenance	Qualified installer	Qualified electrician

Personnel must have suitable qualification for the type of work. The area of responsibility, competence and monitoring of personnel must be precisely regulated by the operating company. If personnel do not have the necessary skills, they must be instructed and trained accordingly.

## Responsibility of the operating company

Installation and operation of the product must be carried out according to current technical codes of practice.



### Note!

In EU countries and the countries of destination, the standards, regulations, rules and directives that apply in that country must be implemented.

Like any other electrical device, this product can fail due to the absence of mains power or due to a technical fault. If damage or consequential damage occurs due to failure of the device, take the following precautions at your discretion:

- Installation of a water level-dependent alarm, that is either dependent or independent of the mains power supply, so that the "high water" alarm can be perceived before damage occurs.
- Check the collecting tank/chamber used to ensure it is leak-tight up to the upper edge before putting the product into operation.
- Installation of backflow protection devices for drainage objects where damage can occur due to wastewater leakage after product failure.
- Installation of an additional product that can compensate for the failure of the product.
- Installation of an emergency power generator.

## Unauthorised alterations, spare parts and accessories

- Alterations or modifications to the product are permissible only with the written approval of the manufacturer.
- Use only the manufacturer's original spare parts and accessories.
- Unauthorised alterations and the use of non-original spare parts and accessories may result in a loss of warranty and liability for the products and for any consequential damage.

## General safety



### Note!

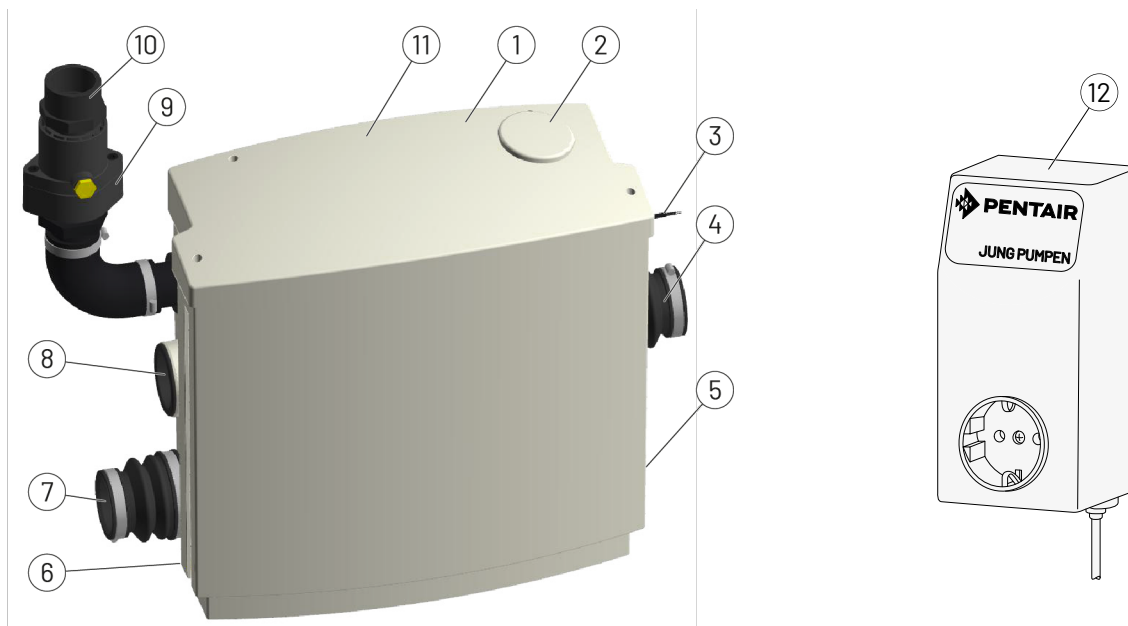
In EU countries and the countries of destination, the standards, regulations, rules, and directives on accident prevention that apply in that country must be implemented.



### ATTENTION!

- The instructions and warnings in this manual must be complied with!
- Wear personal protective equipment.
- Hazardous pumped fluids must be discharged in such a way that there is no danger to persons or the environment!
- Components and products that have come into contact with hazardous pumped fluids must be decontaminated.
- All safety and protective equipment must be re-installed and re-activated immediately after work has been completed. Next, check that all functions are working properly.

## PRODUCT DESCRIPTION



1	Tank with cover	7	Inlet Ø 50 mm connection collar
2	Venting	8	Connection for inlet pipe Ø 50 mm
3	High water switch	9	Swing-type check valve R32
4	Inlet pipe Ø 50 mm connection collar	10	PVC nipple, outlet elbow Ø 32 mm
5	Connection for inlet pipe Ø 50 mm	11	Connection for inlet pipe Ø 40 mm
6	Emergency draining branch	12	Alarm system with potential-free contact

The Hebefix PRO lifting station is intended to be used exclusively in stationary systems for lifting faeces-free wastewater, aggressive wastewater, and aqueous solutions with a salt content of up to 15 %. There are two connection branches at each side and one at the top, to which inlet pipes can be connected. The customer's pressure pipeline is connected to the swing-type check valve. The Hebefix PRO is equipped with a float switch that switches the pump on and off according to the water level. If the high water switch is triggered, the alarm unit will activate a loud buzzer.

## TECHNICAL DATA

Operating voltage	1/N/PE x 230 V, 50 Hz							
Motor rating P1 / P2	320 / 200 W							
Rated current	1.4 A							
Weight	7 kg							
Housing protection category	IP 20							
On-site pre-fuse	10 A							
On-site residual current circuit breaker	≤ 30 mA							
On-site pre-fuse	10 A							
Temperature of pumped medium	1 - 35 °C							
Pump performance	H [m]	1	2	3	4	5	6	
	Q [m³/h]	6.5	6.0	5.7	5.0	4.0	2.4	

## EMC

When our standard submersible pumps and accessories are installed as specified and used as intended, the control units meet the protective requirements of the EMC Directive and are suitable for domestic and commercial use when connected to the public power supply network. If connected to an industrial power supply network within an industrial facility, where the power supply is provided by an in-house high-voltage transformer, there may be insufficient immunity to interference.

## Transport/storage

The Hebefix PRO must be protected from the weather and stored in a dry place.



### ATTENTION!

The Hebefix PRO must **never** be allowed to freeze!  
If there is a danger of frost, drain all the water from the Hebefix PRO.

## INSTALLATION

When installing the unit, compliance with the national laws, regulations and local requirements must be assured. For example:

- Gravity drainage systems inside buildings (EN 12056)
- Installation of low voltage systems VDE 0100

If you install the unit below the backflow level, then route the pressure pipe, in accordance with DIN 12056, in a loop above the locally defined backflow level. Installation of the swing-type check valve is mandatory.

Each inlet pipe connected to the unit must be fitted with an odour trap in accordance with DIN EN 12056-2.



### ATTENTION!

NEVER put the mains plug in water!  
Ingressing water may result in malfunctions and complete failure!  
Always keep the mains plug away from the collecting chamber and from water.



### NOTE!

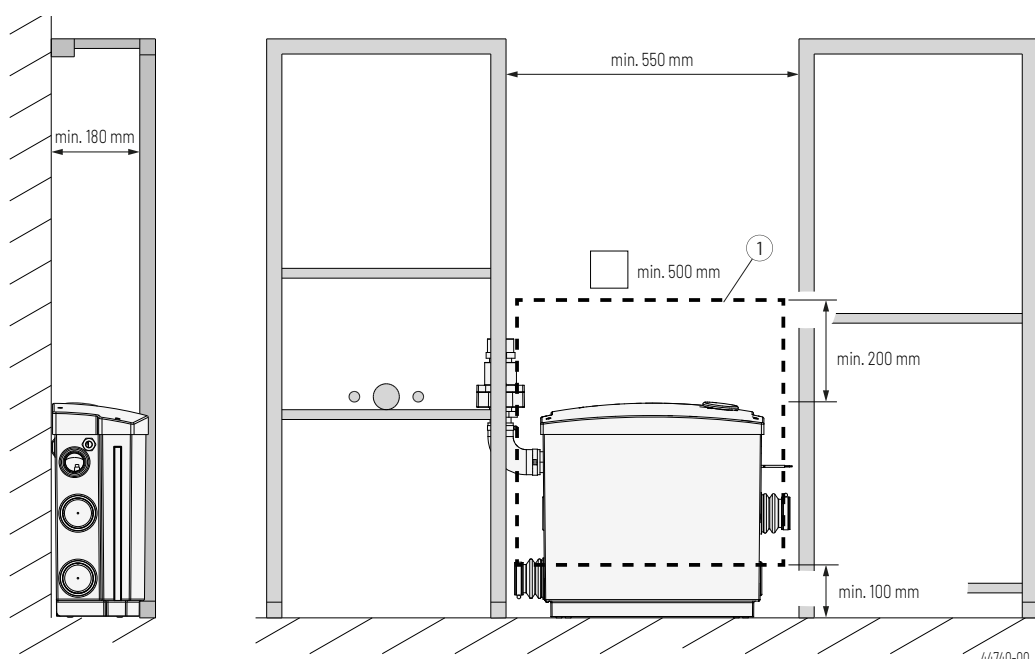
Ventilation of the Hebefix PRO is essential.  
If larger volumes of wastewater are expected, then connect the inlet to the left-hand side of the Hebefix, if possible.

## Installation in pre-wall systems



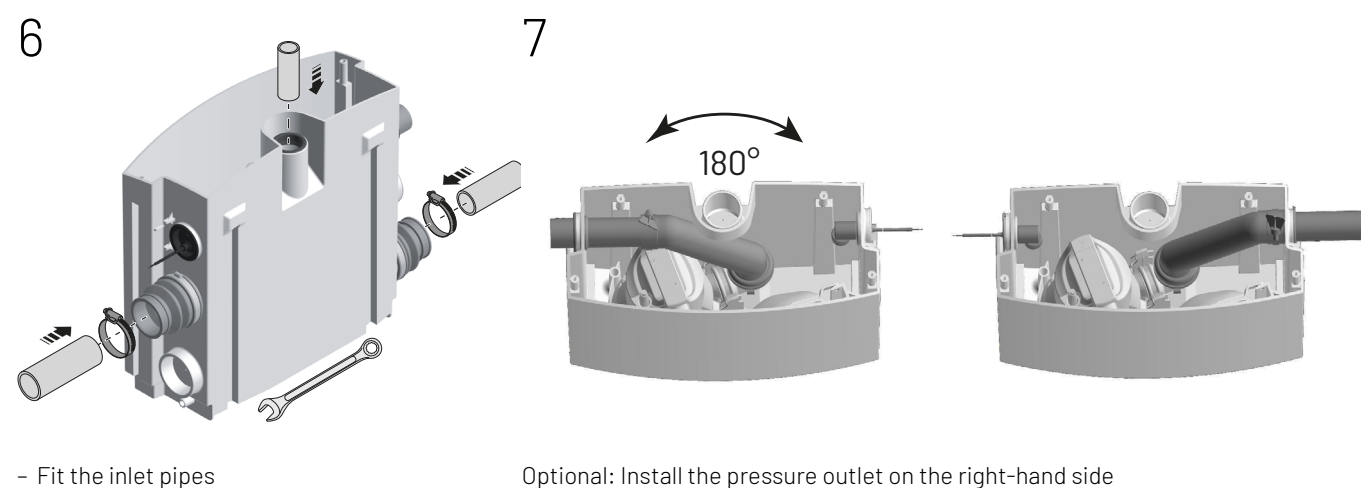
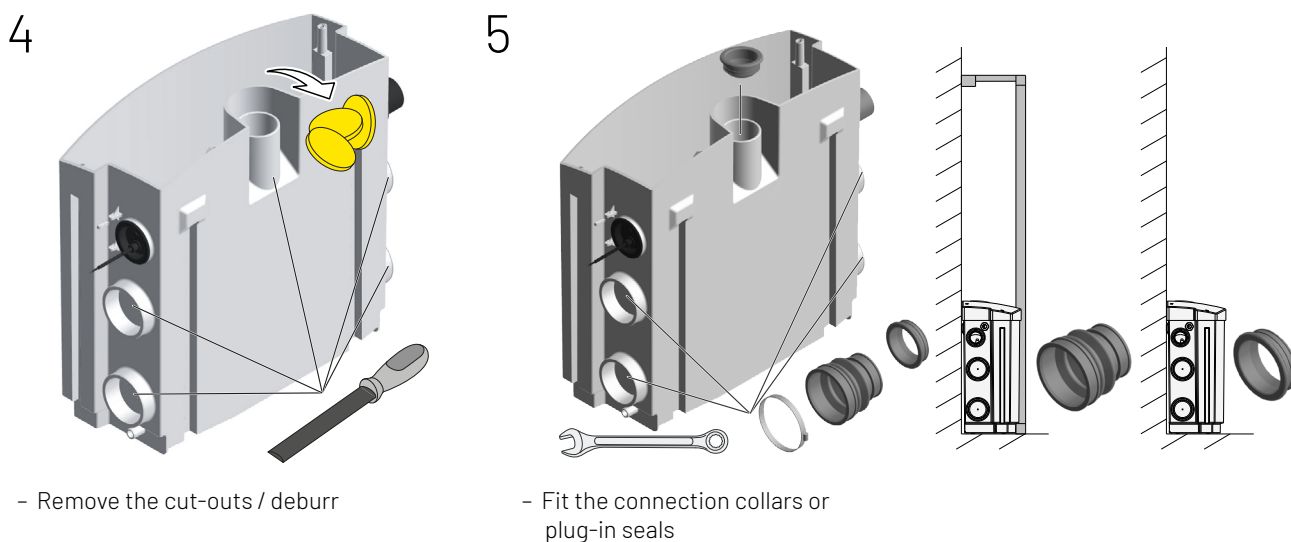
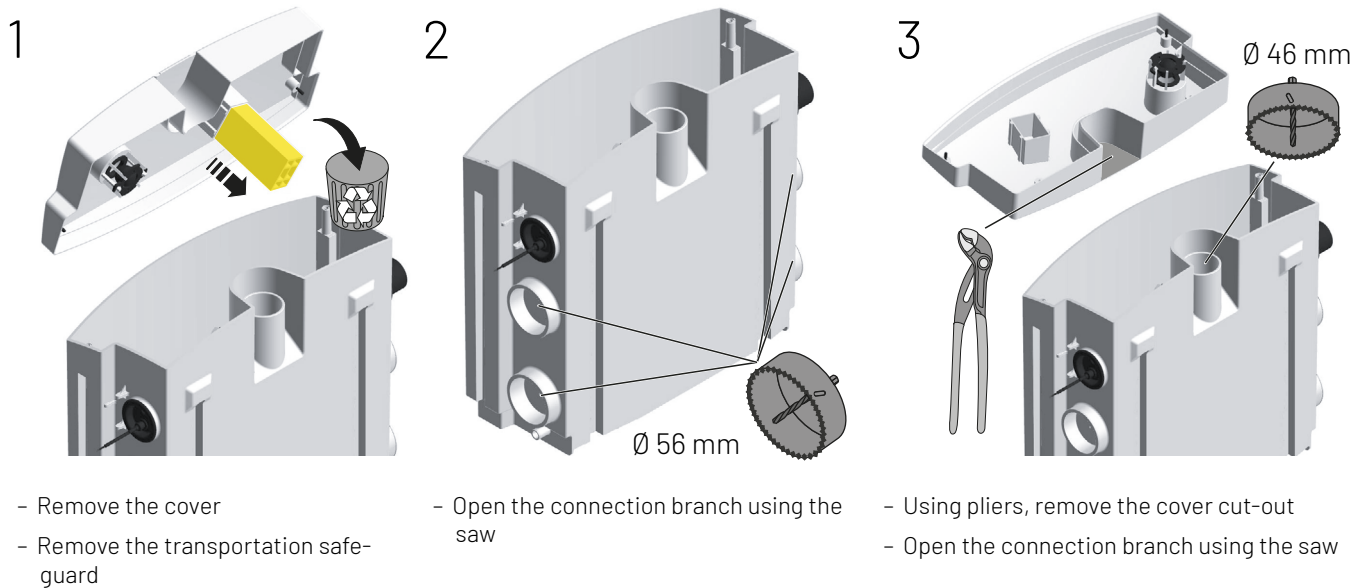
### NOTE!

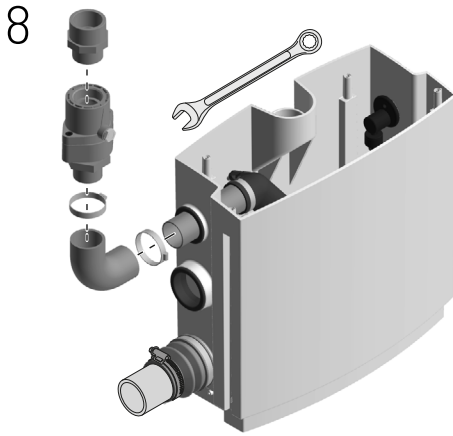
The Hebefix PRO can be combined with standard pre-wall systems, provided the mounting surface has a depth of 18 cm.  
The necessary dimensions are indicated in the drawing. The unit should be fitted before the cladding of the pre-wall system is in place. This makes it easier to install the unit and to check the connections!



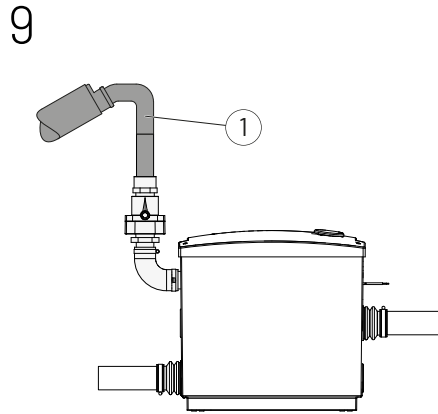
1	Maintenance opening	The specified maintenance opening dimensions and installation dimensions must be observed in order to allow sufficient space for removing the pump for maintenance at a later date.
---	---------------------	---

A maximum of three drainage sources may be connected!





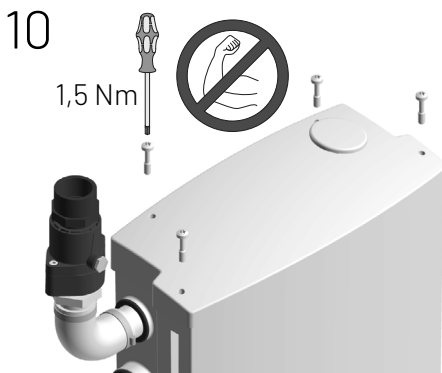
- Install the pressure outlet



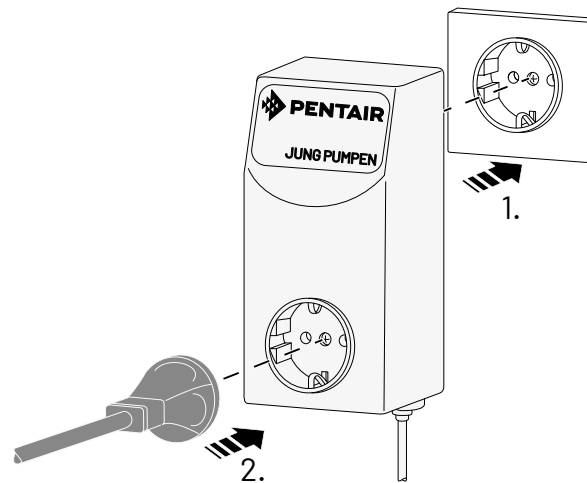
1 Customer's pressure pipe

### Install the customer's pressure pipe

The customer's pressure pipe is installed without a gradient. Beyond the highpoint of the pressure pipe, the diameter of the pressure pipe should be increased. This will prevent any suction lifting, which could otherwise cause malfunctions.



- Fit the cover and fix it in place with the screws provided.

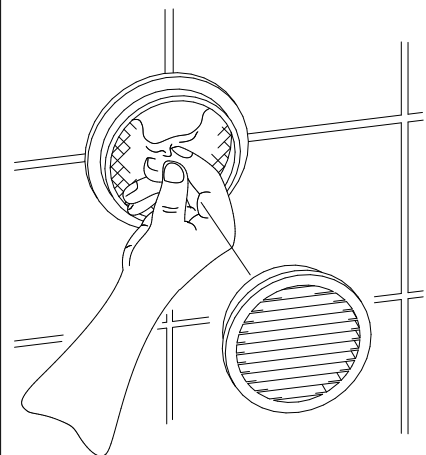
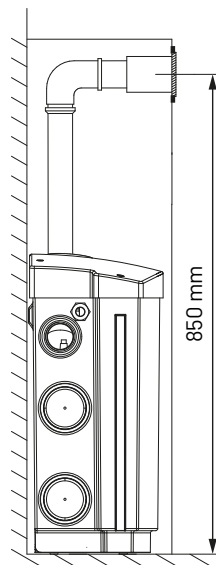
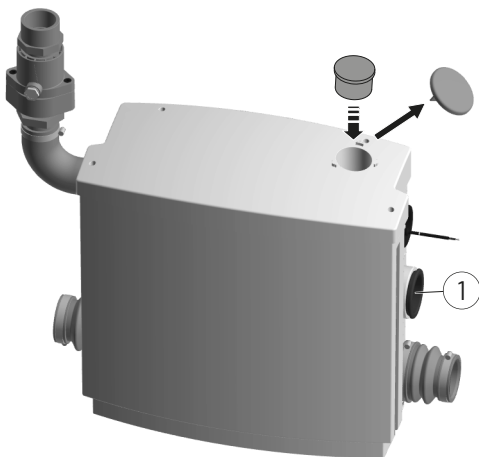


## Tank ventilation in pre-wall systems



### NOTE!

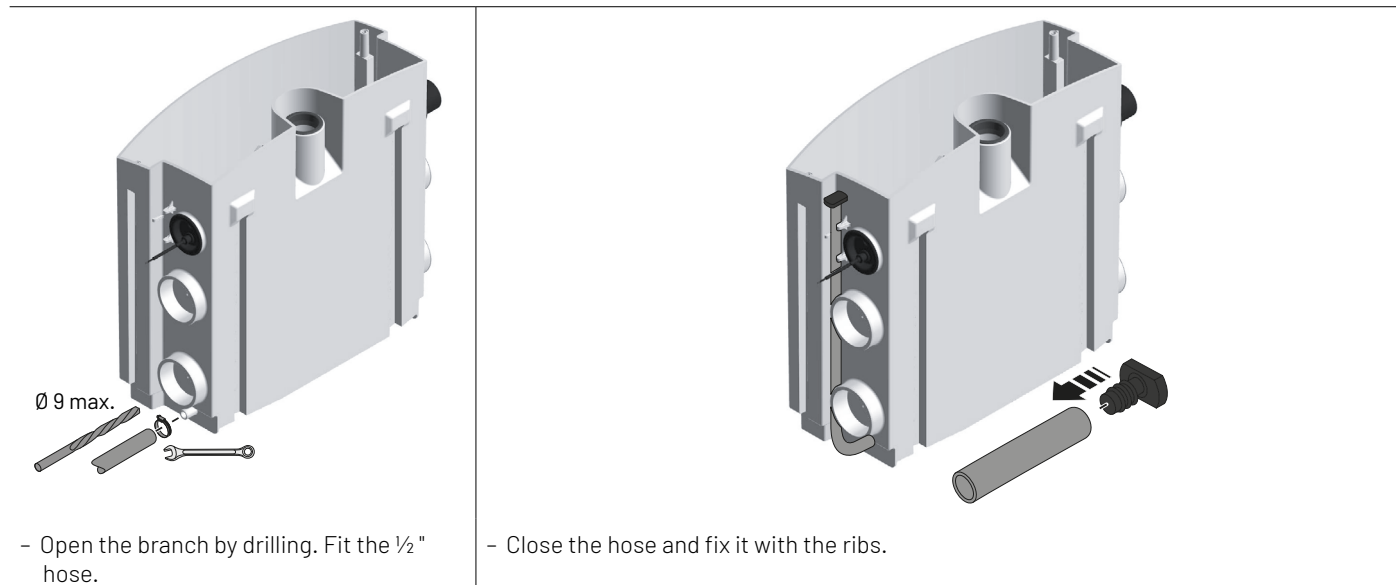
The ventilation **MUST** be vented above roof level or into the room where it is installed.  
Condensate from the tank can lead to mould growth and moisture damage if unnoticed.



1 Connection to customer's HT pipeline

Remove the film from the activated carbon filter

## Emergency draining outlet (optional)



## Mains power connection

Connect the Hebefix PRO only to a socket that has been properly installed in accordance with the regulations and is fitted with at least a 10 A (delay) fuse and a residual-current circuit breaker ( $\leq 30$  mA).



### ATTENTION!

NEVER put the mains plug in water!

Ingressing water may result in malfunctions and complete failure!

Always keep the mains plug away from the collecting chamber and from water.

The pump in the Hebefix PRO is fitted with a winding thermostat. If the temperature in the pump is too high, the pump will be switched off automatically before any damage is done to the pump.

– Excessively high temperatures may occur due to dry running, or mechanical or electrical overloading. If dry running occurs regularly, this can cause damage to the pump.



### Warning!

Once the pump has cooled down, it will switch on again automatically!

Danger of injury!

Never touch or hold the pump during its cooling down phase.

## COMMISSIONING

- The Hebefix PRO and all other components of the overall system must be fully assembled.
- Check the electrical connections.
- Check that all functions work properly.

## OPERATION

The Hebefix PRO pumps and discharges the wastewater automatically.



## MAINTENANCE



### Attention!

Before carrying out any work on the device, the mains power supply must be disconnected on all poles and measures taken to ensure it cannot be inadvertently reconnected.



### Warning!

Improper working procedures on live components can cause an electric shock!

Death or serious injury from electric shock!

Work on live components must only be carried out by a qualified electrician.

The Hebefix PRO requires very little maintenance. A visual inspection should be carried out once a year.

- Check the tightness and seal of all connections
- Remove any deposits from the tank
- If the system has an activated carbon filter, replace it

## FAULTS

Fault	Cause	Action
Pump does not pump	On-site fuse/residual-current circuit breaker tripped or faulty	Check the on-site fuse/residual-current circuit breaker. If this keeps occurring, have this checked by an electrician.
	The winding thermostat of the pump has been triggered	Check whether the pump housing is hot Allow the pump to cool down
	The venting system is clogged	Clean the venting port
The impeller is blocked	Solids and fibres in the pump housing	Clean the pump housing
Decreased pumping performance	The suction nozzle is blocked. The pressure pipe is blocked	Clean the affected parts
	The impeller is worn	Replace the impeller

## Alarm message / remove blockage



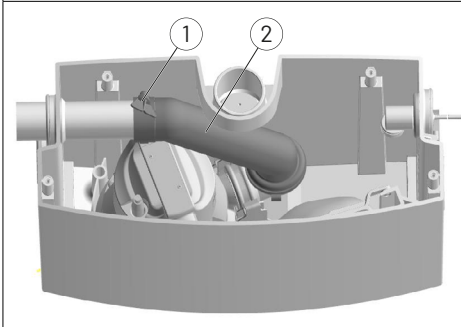
### ATTENTION!

Do not open the tank!

Backed up water from the connected drainage sources is flowing out from the tank!

First remove the backed up water from the drainage sources.

**Current status:** Alarm message / blockage in the Hebefix; water is backed up in the drainage sources.

<b>Operation:</b> In pre-wall systems:	<ol style="list-style-type: none"> <li>1. Remove the inspection flap/inspection opening frame</li> <li>2. Pull the plug out of the socket</li> <li>3. Insert the plug briefly into the socket and check the pumping process</li> </ol>
<b>Check:</b>	<p>Pumping process is normal. Fit the inspection flap/inspection opening frame</p> <p>Pumping process is not normal. Deinstall the pump</p>
<b>Operation:</b>	<ol style="list-style-type: none"> <li>1. Pull the plug out of the socket</li> <li>2. Remove the backed up water from the drainage sources and from the Hebefix. Use the emergency draining branch, if present.</li> <li>3. Remove the cover</li> </ol> <div data-bbox="550 795 1013 1120">  </div> <div data-bbox="1013 795 1482 1120"> <p>– Release the wing bolt 1 and remove the outlet elbow 2</p> </div> <ol style="list-style-type: none"> <li>1. Remove the pump from the tank</li> <li>2. Clean the tank and the pump</li> <li>3. Install the pump again           <ul style="list-style-type: none"> <li>– Make sure that the pump is fixed securely in position</li> </ul> </li> <li>4. Connect the float lever to the fork of the float</li> <li>5. Fit the outlet elbow and tighten the wing bolt by hand</li> <li>6. Pull the pipeline out of the tank as far as it will go, so that the float is not obstructed</li> <li>7. Manually check that the float functions properly.</li> <li>8. Insert the plug into the socket</li> <li>9. Carry out several tests by allowing water to flow in from the drainage sources</li> <li>10. Refit the cover</li> <li>11. Fit the inspection flap/inspection opening frame</li> </ol> <div data-bbox="1013 1120 1482 1832"> <p>The Hebefix PRO is ready to use again.</p> </div>



Jung Pumpen GmbH  
Industriestr. 4-6  
33803 Steinhagen  
Deutschland  
Tel. +49 5204 17-17  
kd.jp@pentair.com

Pentair Water Polska Sp. z o.o.  
ul. Plonów 21  
41-200 Sosnowiec  
Polska  
Tel. +48 32 295 1200  
pl.jp@pentair.com

All indicated Pentair trademarks and logos are property of Pentair. Third party registered and unregistered trademarks and logos are the property of their respective owners.  
© 2025 Pentair Jung Pumpen

Subject to technical and design changes in the course of continuous product improvement. © Pentair Jung Pumpen