

HEBEFIX MINI

DRAINAGE LIFTING STATION

- Plug-in device
- Quiet operation
- Pressure-tight tank
- Hot water up to 55 °C (short-term 70 °C)
- Wall or floor installation



DESCRIPTION

The drainage lifting station Hebefix mini is the smallest member of our Hebefix series and can be installed quickly and easily. Thanks to its very compact design, it not only fits into all commercially available pre-wall systems, but also finds its place in a vanity unit or next to a shower. The three inlet options (2 x DN 50, 1 x DN 40) and a flexible pressure outlet in DN32 make it a small all-rounder when only limited space is available.

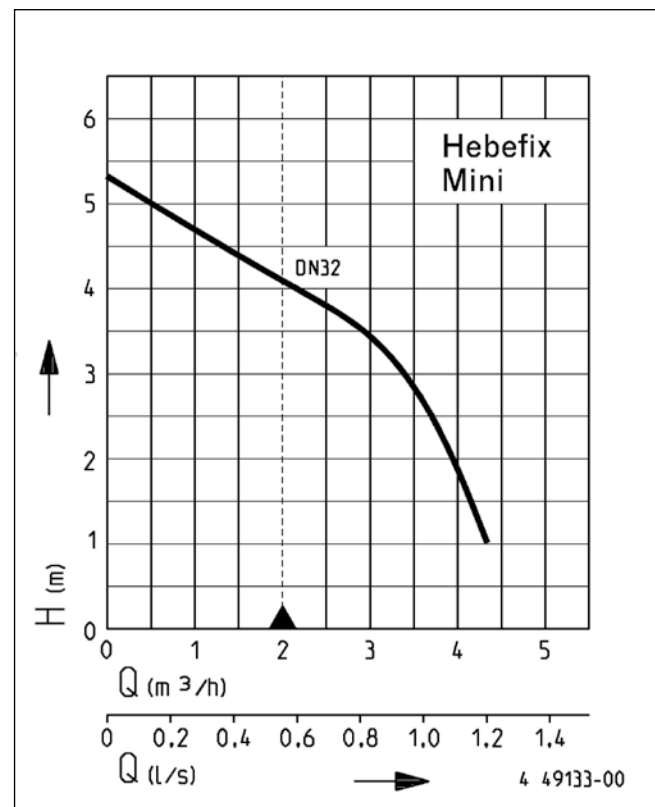
The Hebefix mini can be used wherever faecal-free waste water above or below the backpressure level cannot be disposed of in gravity. Hand washbasins, showers, bidets and water softeners for detached and semi-detached houses can be connected. Condensation water from refrigerated counters and air-conditioners as well as waste water from dishwashers in tea kitchens and hot water up to 55 °C (temporarily 70 °C) can also be disposed with the Hebefix mini.

It has a pressure-tight tank, a swing-type check valve and all the necessary devices for floor or wall mounting.

The unit is ready for plug in into to a shock-proof Schuko socket. For installation in bathrooms and showers, the relevant VDE regulations must be observed.

In case of pre-wall installation, a suitable inspection opening, a tank ventilation into the operating room and an alarm system (accessory) must be provided for installation and maintenance work on the system.

PERFORMANCE



| Type | Delivery head H [m] | 1 | 2 | 3 | 4 | 5 |
|--------------|---------------------|-----|-----|-----|-----|-----|
| Hebefix mini | Flow rate Q [m³/h] | 4.3 | 3.9 | 3.4 | 2.2 | 0.5 |

We reserve the right to change specifications without notice. Pump performance is subject to ISO 9906 tolerances

The minimum flow velocity in the pressure piping must be 0.7 m/s according to EN 12056. This data is represented in the performance curve as a limit of application.



HEBEFIX MINI

DRAINAGE LIFTING STATION

SCOPE OF SUPPLY

Unit (ABS) incl. pump and swing-type check valve according to EN 12050, ready for plug-in with 2 m cable and safety-plug, PVC fitting, flexible discharge, connecting sleeves, plug-in seals,

ventilation insert with activated carbon filter, clamps and fastening material

MECHANICAL DATA

| | | | |
|---------------------|----------------------------------|---------------|------------------------------------|
| Pump | Vertical single-stage | Impeller | Open centrifugal impeller, plastic |
| Free passage | 10 mm | Motor housing | Stainless steel |
| Bearing | Ball bearings, grease-lubricated | Pump housing | Plastic |
| Seal on medium side | Mechanical seal | Submersible | No |
| Shaft | Stainless steel | Weight | 3.9 kg |

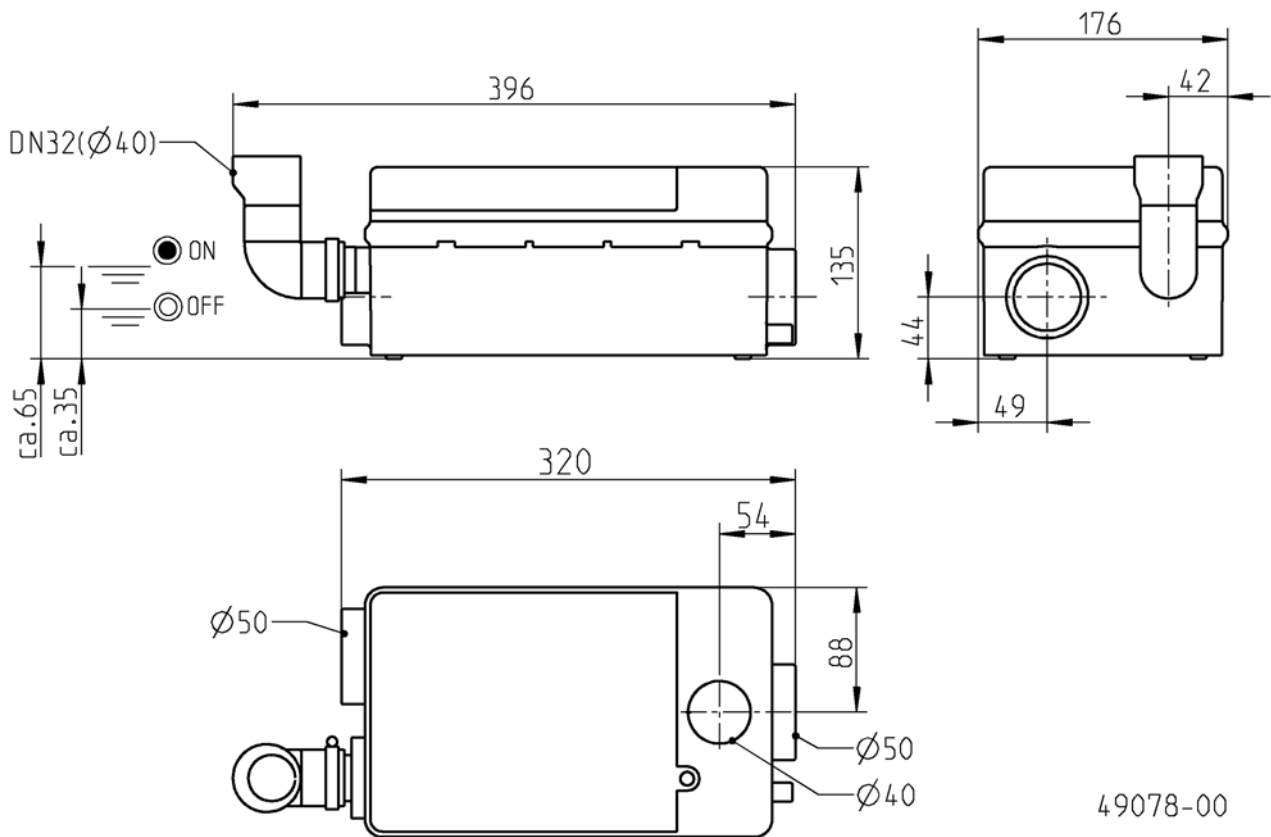
ELECTRICAL DATA

| | | | |
|-------------------|--------------|------------------|--------------------------|
| Voltage | 1/N/PE~230 V | Insulation class | B |
| Motor rating P1 | 0.22 kW | Motor protection | Installed in the winding |
| Motor rating P2 | 0.11 kW | Plug | Safety |
| Type of enclosure | IP 44 | | |

HEBEFIX MINI

| Type | Code No. |
|--------------|----------|
| Hebefix mini | JP48727 |

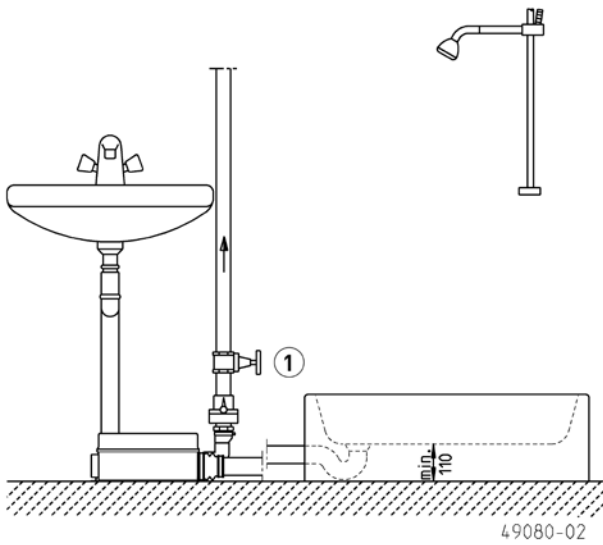
Dimensions Hebefix mini (mm)



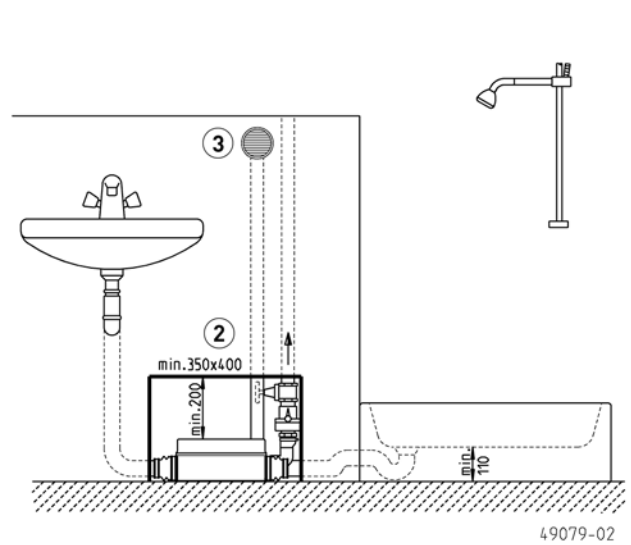
HEBEFIX MINI

DRAINAGE LIFTING STATION

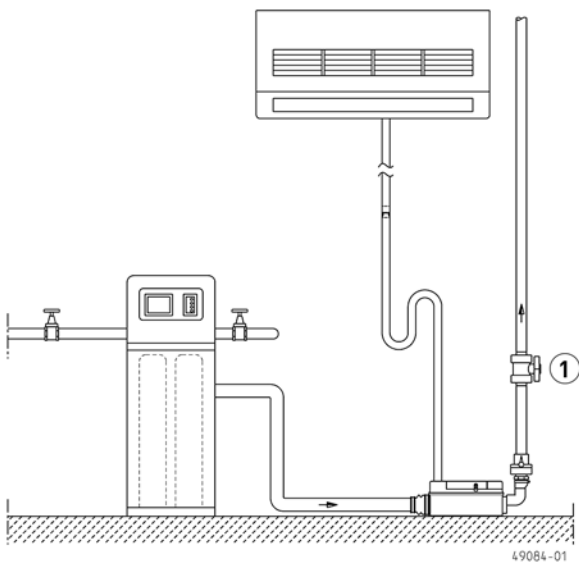
Example of installation



Example of pre-wall installation



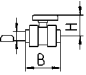
Example of water softener installation




HEBEFIX MINI

DRAINAGE LIFTING STATION

MECHANICAL ACCESSORIES

| | | | | Code No. |
|---|-----------------------------------|--|---------------|----------------|
|  | ① Stop-valve Ball valve | 1¼", PVC, for aggressive media | 105x155 (HxB) | JP46111 |
| | ② Installation kit | selectable size according to the tile painting | | JP41075 |
| | ③ Ventilation | for pre-wall installation | | JP49096 |

ELECTRICAL ACCESSORIES

| | | | | Code No. |
|---|----------------------------|---|--|----------------|
|  | ⓐ Alarm unit AGR | reed switch, mains dependent, potential-free contact, 3 m cable | | JP44893 |